

SAFER
GREENER
HEALTHIER
Transforming travel in Essex

CONTENTS

1. Title Page
2. Contents
3. EV Myth Busting
4. Essex Electric Vehicle and Charge Point Strategy
5. On-street Residential Charge Point Scheme (ORCS)
6. Photos of ORCS Chargers
7. Local Electric Vehicle Infrastructure (LEVI) Project
8. Cross Pavement Charging Solutions
9. Our Estates
10. Electrifying Essex Campaign
11. Our Ask – How can you help?
12. Our Ask – How can you help?
13. Q&A and contact details
14. Back cover slide



EV MYTH BUSTING

Fact: Batteries are designed to last 10-20 years. Data shows, even after 150k miles, many batteries still retain 80-90% capacity.

Fact: EV are 11 times less likely to catch fire than an ICE vehicle.

Fact: Yes, EVs have higher production emissions, but they “pay off” their carbon debt within 11,000 to 30,000 miles, after which they are much cleaner than ICE vehicles. Over their lifetime, EVs emit roughly 1/3 to 2/3 fewer greenhouse gases.

Fact: The National Grid has confirmed that even if all cars were electric, demand would only increase by roughly 10%.

Fact: The average new EV has a range of over 200-300 miles. 99% of journeys in the UK are under 100 miles.

Fact: Used EV prices have dropped by over 30% since 2022. While upfront costs can be higher, EVs are also significantly cheaper to run and maintain (30-40% less) because they have fewer moving parts.

Fact: 95-98% of battery materials can be recycled. Furthermore, old batteries are repurposed for stationary energy storage.

ESSEX ELECTRIC VEHICLE AND CHARGE POINT STRATEGY

- Right Charger Right Place
 - Six strategic priorities
 - Essex will need **6000** public charge points by 2030
 - As of October 2025, there were **792** public charge points in Essex
 - That's **63 charge points per 100,000 people** in Essex, compared with:
 - Hertfordshire: 119
 - Suffolk: 115
 - As of September 2025, there were:
 - **24,699 battery electric vehicles (BEVs)** registered in Essex
- And
- **18,090 plug-in hybrid electric vehicles**
 - By 2040, we're predicted to see up to **747,000 BEV** vehicles in Essex (around $\frac{3}{4}$ of all vehicles).



Objective 1:
Social Equality



Objective 2:
Healthy Environment



Objective 3:
Resilient and Safe Network



Objective 4:
Integrated Network



Objective 5:
Connected Network Meeting
Essential Demand



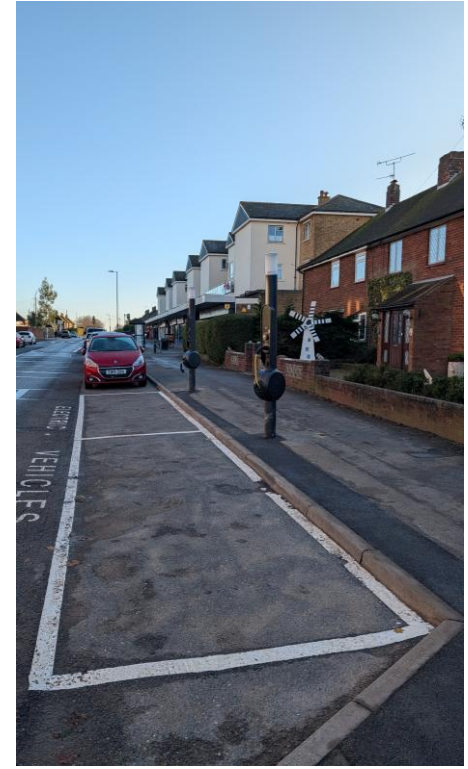
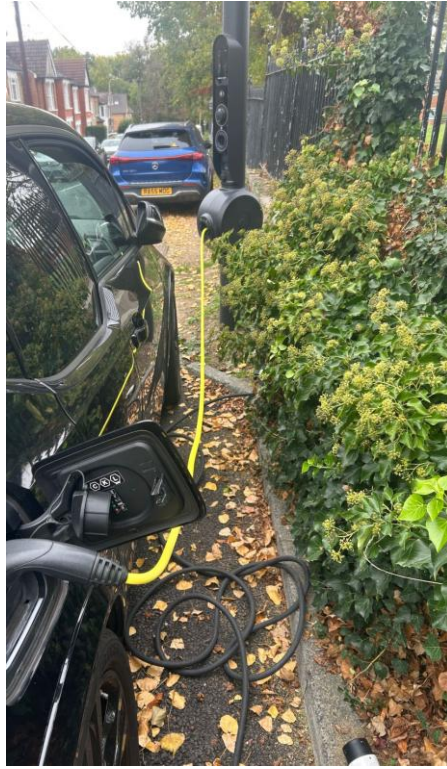
Objective 6:
Creating Better Places



ON-STREET RESIDENTIAL CHARGE POINT SCHEME (ORCS)

- March 2023 - **£236,000 grant funding** secured from Office of Zero Emission Vehicles.
- A further **£400k capital investment** has been made by Charging Point Operator (CPO) Qwello to install the full programme.
- As of February 2026, ECC/Qwello have installed **new 62 charging point sockets** across Essex.
- They have also novated 14 charging point sockets from a lapsed contract, meaning Essex now has **76 charge point sockets** in on-street residential locations across most districts.
- Usage data: Most used charging points in January 2026 (not all locations were live at this point)
 - Moulsham Street, Chelmsford – **34.93%**
 - Turpin's Lane, Woodford Green – **21.41%**
 - Wimpole Road, Colchester (outside Glen Hopkin) – **19.58%**
 - **National average – 8%**
- This pilot project has put us in an excellent position for the effective rollout of more charging points.
- The locations for ORCS charging points and their status can be found here:
<https://letstalkessexsustainabletravel.co.uk/ev-charging-map>





ON-STREET RESIDENTIAL CHARGING POINT SCHEME (ORCS)

- Charging point designs vary by location to provide choice – this includes **tethered CPs** where the cable is permanently attached to the CP in a drum – Qwello is one of the only CPOs to offer this type of design.
- Qwello has recently introduced a CP where the feeder pillar is integrated into the CP, negating the need for a separate pillar and the **first one** has been installed on Forest Road, Loughton.

LOCAL ELECTRIC VEHICLE INFRASTRUCTURE PROJECT (LEVI)

- At least **5,000 standard speed charging sockets** to be installed, mostly in on-street residential areas that serve the 36% of residents who do not have access to off-street parking.
- **Fully funded** with £8,382m of Office of Zero Emission (OZEV) funding and private investment – ongoing operation and maintenance costs, responsibilities and liabilities will be covered by and sit with Charging Point Operators.
- 15-year contracts, **5-year delivery** (installation) period.
- Four Concession contracts currently being evaluated and moderated, ensuring **variety of tech** types across selected locations (some will not be suitable for specific technology types) and competition between providers.
- Lot 1 will be for above ground charging sockets in locations across Harlow, Epping Forest, Brentwood, Basildon, Castle Point and Rochford = minimum **1650 sockets**.
- Lot 2 will be for above ground charging sockets in locations across Uttlesford, Braintree, Chelmsford, Maldon, Colchester, Tendring = minimum **1650 sockets**.
- Lot 3 will be for flat and flush to the floor technology across all City's, Districts and Boroughs = minimum **1000 sockets**.
- Lot 4 will be in car parks, primarily owned by third-party public-sector partners, secured through a collaborative agreement = minimum **700 sockets**.



CROSS-PAVEMENT CHARGING SOLUTIONS

- It is currently **unlawful** to charge EVs on the highway using a charging cable trailed across a highway.
- Secured **£447,000** of funding from OZEV to roll out charging channels, funding a maximum of **£1200** per channel.
- Working to develop a trial to help the high proportion of residents who do not have access to off-street parking – **offering a choice of charging solutions** to enable more people to make the switch – not all locations will be suitable for public charging and vice versa.
- Cable channels known as “gulleys, enable people to charge EVs on-street using their home electricity tariff, making EV charging more **equitable**.
- We will procure a supplier to install up to **10 channels per district** in the first instance, and we will collect data over a six-month period which will help to decide if we roll the channels out further.
- We will require the channels to be **flexible**, so it bends to uneven pavement surfaces and have a **cover**, so it is safe for people to walk and wheel over. An example of this is Kerbo Charge cable gully.
- Trial participants will need to meet **eligibility criteria** including no access to off-street parking and ownership of an EV.
- **Maintenance and liability** of the channel will sit with the supplier and the charging cable with the resident.
- Hoping to start a **trial in the summer**.



Photo Credit: Kerbo Charge Website



OUR ESTATES

- ECC has made a **public commitment** to “support transition to EV fleet for ECC” – Climate Action Plan and Electric Vehicle and Charging Strategy
- February 2025 – introduced an **EV salary sacrifice scheme**, whereby employees can acquire and pay for an EV via a salary sacrifice arrangement - to date, 106 employees have ordered a car through the scheme.
- Last summer we **installed 32 EV charging sockets** across six Cat 1 ECC buildings:
 - County Hall – 6 sockets
 - Saffron Walden – 2 sockets
 - Goodman House – 8 sockets
 - Ely House – 12 sockets
 - Essex Records Office – 2 sockets
 - Magnet House – 2 sockets
- Can be used by Members, employees, visitors, contractors/partners/suppliers.
- **Six additional sockets** will be installed at Freebournes House in March 2026.
- **No revenue income** generated from the charging points, but must ensure energy, maintenance and software costs are covered by usage.



ELECTRIFYING ESSEX CAMPAIGN



- Shortly launching our new **Electrifying Essex campaign**. It will highlight the new public EV charging points we are installing across Essex and aims to help build community support ahead of the ramp up in installations later in 2026.
- The campaign will also **promote the benefits** of EVs, **tackle common myths** and misconceptions, and encourage residents to **consider the switch** to an EV.
- Developed an **eye-catching campaign identity**, which will provide a consistent look and feel across the campaign and throughout our future EV work.
- Primarily **digital**, with promotion across the Safer Greener Healthier and Essex County Council **social media channels**, as well as other advertising.
- We will also be promoting an **Electrifying Essex event** we are hosting in Colchester in July, where residents will be able to find out more about EVs, talk to experts and test drive vehicles. People must register online in advance.



OUR ASK – HOW CAN YOU HELP?

Champion the Transition

- Promote EVs alongside walking, cycling and public transport
- Help share and amplify our Electrifying Essex campaign

Support Charging Infrastructure

- Advocate for chargers across all cities, districts and boroughs with all partners
- Promote the narrative: “future-proofed parking” instead of “lost spaces”
- Support delivery unless safety or accessibility issues apply

Use Local Knowledge

- Identify suitable charging point sites in your communities
- Help unlock council and partner-owned land

Engage Communities Early

- Support resident and business engagement and suggest charging point locations - <https://letstalkessexsustainabletravel.co.uk/request-a-charging-point>
- Help address concerns before installation through our Location Review Process (LRP)



OUR ASK – HOW CAN YOU HELP?

Raise Awareness

- Promote the need for charging points - <https://letstalkessexsustainabletravel.co.uk/ev-charging-map>
- Share updates on new and planned sites
- Share information about our Electrifying Essex event on 18th July in Colchester and encourage attendance

Support our 2026 Home Charging Trial

- Encourage volunteers for the cross-pavement channel trial
- Promote safe and accessible home charging

Encourage Responsible Use

- Promote fair use and good charging etiquette

Protect our Assets

- Help deter vandalism and encourage reporting of issues and misuse to CPOs

Lead by Example

- Promote use of chargers at ECC offices
- Support low-emission council travel



Q&A

WE'RE HAPPY TO ANSWER ANY QUESTIONS OR QUERIES BEYOND THIS BRIEFING. PLEASE CONTACT THE TEAM EMAIL ADDRESS:

[ECC EV CHARGEPOINTS@ESSEX.GOV.UK](mailto:ECC_EV_CHARGEPOINTS@ESSEX.GOV.UK)

SAFER
GREENER
HEALTHIER
Transforming travel in Essex